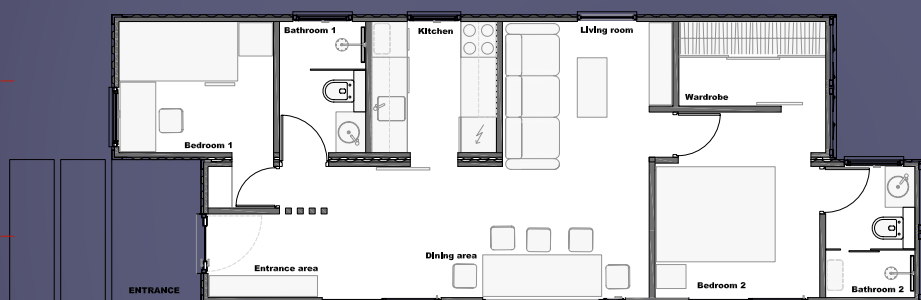


# Model G340

Imagine the complete comfort of living wherever you want

We bring it into reality.





• **Basic info G340:**

Living in a space—a sprawling open layout that seamlessly combines the kitchen, dining and living room, all leading to a balcony overlooking your private yard.

Modern bedrooms, bask in the glow of natural light; one even offers a dedicated office space.

Second bedroom is designed for ultimate comfort, with a bed positioned beneath the window, providing you with a breathtaking view to wake up to each morning, this bedroom has own bathroom.

This container home is more than just a house; it's an invitation to a lifestyle of luxury and convenience that you won't want to miss.

- **The unit is 60 sqm**
- **Dimensions:** 14,2 x 4,9 x 2,9m



**Containers:** Our primary choice for container units consists of new 20ft and 40ft containers. However, we also offer the option to utilize recycled containers for those interested in sustainable alternatives.



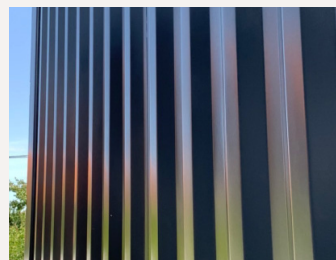
**Construction and reinforcements:** The process of cutting out and reinforcing the structure is crucial, and it requires meticulous execution for optimal results.



**Thermal insulation:** Our insulation features a polyurethane foam layer measuring 8-10cm in thickness. This advanced insulation offers three times the effectiveness of traditional options.



**Doors and windows:** Seven chamber triple glazed windows; thermal energy transmission:  $U_r=0.94W/(m^2K)$



**Painting and protection:** These special colors have 5 year guarantee against rust.



**Heating:** Apart from the cost-effectiveness, this space-saving solution offers a delightful underfoot experience.





**Switches:** Experience convenience with our modern Aling-Conel switches, designed for ease of use. Additionally, our homes include modular USB chargers, ensuring your devices are always powered up and ready to go.



**Finishing:** Our finishing touches involve the use of special drywall boards, resulting in a fine and smooth surface. We complete the look with eco-acrylic paint for an environmentally friendly finish.



**Lights:** Illuminate space with a combination of lighting options. Our container homes feature exterior LED lights for security and ambiance, interior IKEA LED lights for efficiency, and handcrafted lights.

### The Urban Minimalist Case study

People that live in container homes form deeper and more meaningful connections with each other due to their shared values, close living quarters, and collaborative living.

## G340 Specification list

Item	Description
<b>2x40ft Container</b>	New, one way container
<b>Full Polyurethane Insulation</b>	The container is fully insulated with a thickness of 10cm of polyurethane insulation, ensuring excellent thermal performance
<b>“Rehau/ Schüco” Windows and Sliding Balcony Doors</b>	Our container homes feature triple-glazed windows and balcony doors with seven-chamber design, providing superior energy efficiency and sound insulation.
<b>Aluminium entrance door</b>	Aluminium Flat Frame 1,4 W/(m2K)
<b>Full Electrical Installation</b>	Ready to connect to the electrical system. 220V
<b>Full Plumbing System</b>	Internal toilet flush (Geberit built-in) Ready to connect to the plumbing system
<b>Dry Walls</b>	High quality palster boards (Knauf), smooth finish combined with OSB boards.
<b>Toilet Wall and Floor Tiles</b>	In agreement with the client
<b>2x Toilet Equipment</b>	Faucet, Shower Faucet, Bathroom cabinet, Toilet, Shower cabin, sink, mirror
<b>Internal Doors</b>	Doors at the bathroom and bedroom
<b>Floor Tiles</b>	In agreement with the client
<b>External Paint</b>	Polyurethane “Selamix” USA
<b>Internal Paint</b>	Vivachrome Neopal white acrylic paint Eco-friendly
<b>Switches and Outlets</b>	“Aling Conel” - Experience modern design switches and outlets with USB charging ports
<b>Lights</b>	Inside lights by “Ikea” and LED custom made lights.
	1 Year Warranty
<b>Air-Condition</b>	Inverter 2100 BTU
<b>Floor Heating</b>	“Nexans Norway” 7kW Smart Wi-Fi control
<b>Water heater</b>	Ariston water heater 60l
	2 Years Warranty
<b>Smart Container</b>	Completely automated unit by Aling Conel
	5 Years Warranty



€57,780.00 net

€61,670.00 net

€68,810.00 net

\*Price excluding delivery & on site installation

\*Construction time 8-9 weeks

# MODEL G240

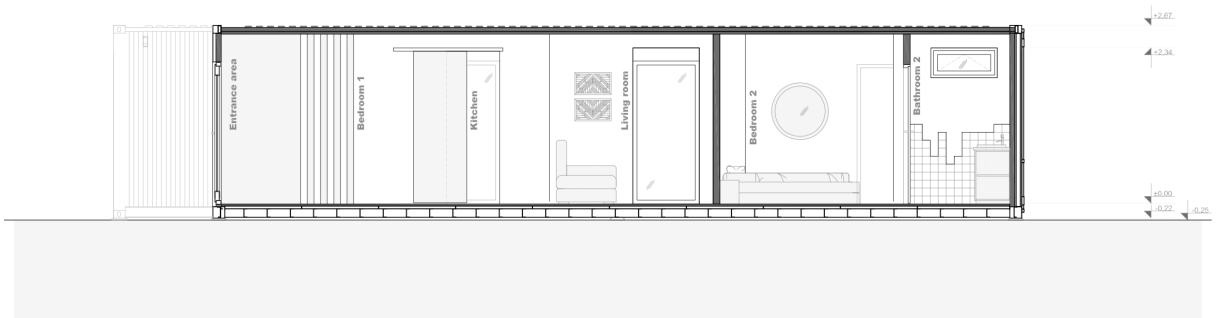
## FLOOR PLAN



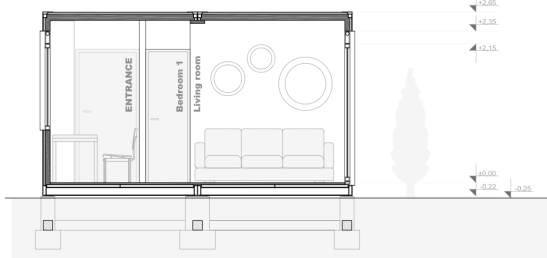
**B-B**



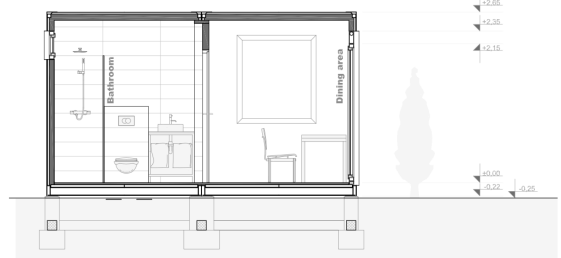
**A-A**



**C-C**



**D-D**





**Optional:**

**With our fully equipped container house, you have the chance to live in a space that's not just functional but also boasts a modern and sophisticated design.**

Item	Description
<b>Kitchen</b>	Kitchen with the equipment (kitchen extractor, oven, kitchen sink, fridge, faucet)
<b>Bed</b>	1x Ikea bed, and mattress 140x200x27cm
<b>Sofa</b>	Modular corner sofa ready to transform into double bed
<b>Wardrobe</b>	Wardrobe used for storage (main sleeping room)
<b>Extra equipment</b>	Washing machine

 **Additional option €16,350.00 net**





**Container Home Solutions d.o.o**

Joanikija Pamucine 14,  
11211, Belgrade Serbia  
info@avala-home.com  
Tel:+381 66 57 17 750  
www.avala-home.com

